

Teodora Branković and Maja Šega

National museum, Požarevac, Serbia

DIGITISATION OF COLLECTIONS IN THE NATIONAL MUSEUM OF POŽAREVAC

Abstract: The digitalization process in The National Museum of Požarevac started in 2006 and is still carried out. The first phase of the process comprises the archeological collections. The data are stored in CR (Central Register). Up to now 16,000 archeological items has been processed.

Key words: Digitization, The National Museum of Požarevac, CR (Central Register), archaeological collections

The National Museum was founded in 1895. In the Branicevo district the Museum is the main cultural institution and in it we have objects from the entire territory of this district in our collections. This is a complex type of a museum with archaeological, ethnological, historic and history of art collections and a lapidarian in front of the main museum building. In archaeological department we have four different collections: Prehistoric, Antique, Viminacium collection and Medieval collection.

In our four facilities there are permanent exhibitions such as the one in The Ethno Park Museum. In the main museum building there is an archaeological exhibition; in The Miodrag Markovic Gallery there is an art exhibition; in The Museum of Cultural History an ethnographical exhibition, in The House of The Dobrnjac Family a historical exhibition and in Ethno Park at Tulba Hill an open air exhibition of Folks architecture.

Documentation that existed before digitisation is: the entrance book, the inventory book (separate for each collection), photo documentation (negatives of original objects), inventory charts (different type for different collections) and documentation about excavations.

The digitisation process started in 2006, and it involved curators (all curators responsible for collections), document assistants and photographers. In the first phase we started digitisation of all archaeological collections: Prehistoric, Antique, Viminacium collection and Medieval collection. We have proceeded over 16 000 objects so far. Parallel with digitisations we are doing revisions of objects and collections.

All the objects are archaeologically processed, photographed and loaded in Central Registry. In CR all collections have their numbers:

01_ prehistoric collection;

02_ antique collection;

03_ Viminacium collection;

04_ medieval collection;

05_ numismatic collection;

06_ ethnographical collection;

07_ historical collection;

08_ art collection.

In The National Museum of Požarevac we use Central Registry (with minimum of data) by MDA standards for describing the museum objects. The main data that we load in CR are: the number of collection, the inventory number, dimensions, period, date and purchase data, which technique it is made in, material, site at which the object was found and also important remarks.

Within CR it is possible to perform searches about: type of material, sites, techniques of making objects etc.

Fig. 1: Appearance of Central Registry mask for load data

All objects are photographed and each photo is labelled with the collection number and inventory number of the object in collection divided by under line (), Fig. 2.



Fig 2: Marking objects in CR 01_56



Fig. 3: Marking objects in CR with link 01_56_L1

If in the photo documentation we have more than one picture of one object, an object is labelled as such: number of collection _inventory number _ L (link) 1.....4, 5 (Fig. 3).

During photographing we also keep documentation in Excel, because of the quicker collection search by different categories.

The data are also loaded in digital inventory chard, picture 4. In cooperation with The National Museum in Belgrade a program has been made which makes it possible to review objects from CR together with digital photos.

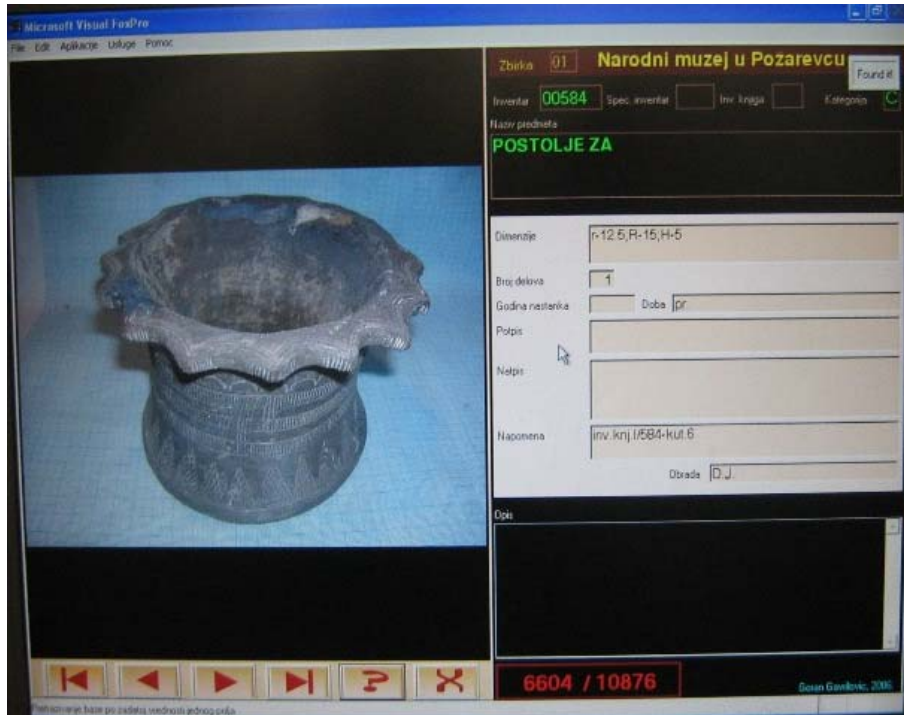


Fig. 4: Digital version of inventory chard

Displaying a photo in this programme is conditioned by giving names for the data file using the same rules as The National Museum in Belgrade.

When we finish digitisation, we expect to have more than 50 000 objects in archaeological collections, but it could be more because of the excavations that The Museum performs every year.

Other collections, except the archaeological, are photographed and placed in storages, and they will be prepared for digitisation in the next period.

Digitalisation makes the objects approachable to professionals by using the unique computer system for museums in Serbia, Jedinstveni muzejski informativni sistem Srbije (JMISS). This process connects parts of collections in one museum with the collections in another museum.

Теодора Бранковић и Маја Шега

Народни музеј, Пожаревац

ДИГИТАЛИЗАЦИЈА ЗБИРКИ НАРОДНОГ МУЗЕЈА У ПОЖАРЕВЦУ

Процес дигитализације, у Народном музеју у Пожаревцу, започео је 2006. године, и одвија се уз помоћ колега из Народног музеја у Београду. Овим процесом обухваћене су археолошке збирке: праисторијска, античка, виминацијумска и средњовековна збирка. До сада је обрађено 16000 предмета. Сви предмети су археолошки обрађени, фотографисани и смештени у нову амбалажу. Подаци се уносе у ЦР, назив, димензије, локалитет, датум, период, материјал, начин израде и напомене. У напомене се уноси стари инвентарни број, нови смештај или нека специфичност предмета. У процесу дигитализације учествују кустоси, документалист и фотограф. Када се заврши процес дигитализације очекујемо да ће у археолошким збиркама бити више од 50000 предмета, што се тиче садашњег стања. Али с обзиром да су археолошка ископавања саставни део музејске делатности, наше збирке ће бити обогаћене новим предметима. У току су припреме за увођење у ЦР и осталих збирки: етнолошке, уметничке и историјске. Предмети из ових збирки су фотографисани и смештени у депое. Екипу која је учествовала у обради материјала сачињавају кустоси-археолози: Драган Јацановић, Драгана Спасић-Ђурић, Оливера Миловић и Теодора Бранковић, документалист Маја Шега и сарадници Марина Радосављевић, кустос-историчар иметности и Марија Медић. Паралелно са дигитализацијом и увођењем у ЦР, вршимо и ревизију збирки.